

# Epson SureColor SC-P6000 – Matte Black (MK)

## A General Guide for Printing on Hahnemühle FineArt Papers

### Installing Profiles

A General Guide for Printing on Hahnemühle FineArt Papers Installing Profiles please refer to your printer manual or our website for a detailed instruction how to install profiles for your printer.

**Note:** Your graphic-application needs to be restarted if it was open when profiles were installed. New profiles will be detected automatically during the start of the application.

### Settings

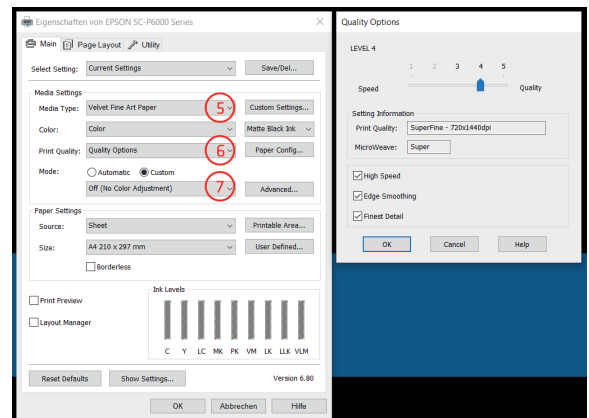
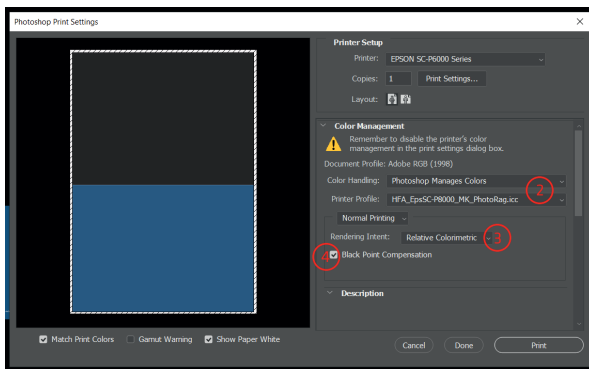
Print drivers will vary from printer to printer and from Macintosh to PC but the general setup will be the same. Be sure to select the proper profile for the printer, paper and ink combination you are using. In our profile names you will find the proper combination to use.

#### Print with Preview / General Settings:

1. Source Space: Document
2. Profile: regarding to your paper and ink combination
- 3.
4. Rendering Intent, Black Point Compensation:  
Needs to be chosen regarding to the image you're using. Eventually you need to test. No recommendation possible.

#### Print Driver / Media Settings:

5. Media: Velvet Fine Art Paper
6. Quality: Level 4 (SuperFine - 720x1440)
7. Mode: Colormanagement Off



**Note:** For traceable printing, please save the settings and recall these settings whenever you print. Varying these settings could affect the outcome of your image. There are other factors that can also affect the output, if needed please refer to your printer manual or image manipulation program for additional color management issues. The screen shots may vary in case of different systems.